

EasyOne Air

Portable and PC spirometer



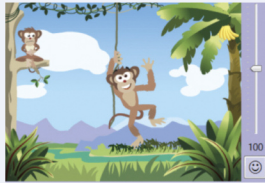
EasyOne Air is a flexible, accurate and proven spirometry solution. Easily connect to the PC with Bluetooth for real-time patient incentives, data exchange and EMR connectivity.

Simple. Certain. Proven.



Features

- Large color touch screen
- Easy navigation
- Rechargeable battery
- Portable or PC mode
- Real-time animated incentives
- Bluetooth connectivity
- Flexible use, consistent results
- Real-time curve display
- Real-time data transfer
- Proven EMR integration with top EMR/EHR systems
- Calibration free technology



Specifications

Test Types: FVC, FVL, SVC, MVV and Pre/Post Testing

Languages: English, French, German, Spanish, Swedish

EMR connectivity: EasyOne Connect

Dimensions: 3.4" x 6.1" x 1.4", 13 oz

Standards: Meets ATS/ERS, NIOSH/OSHA and SSA Disability

Part Numbers

2500-2A: EasyOne Air spirometry system

5050-50: EasyOne Flow Tube box of 50

5050-200: EasyOne Flow Tube box of 200

TrueFlow

The original ultrasonic flow measurement is highly accurate in all flow ranges, independent of gas composition, pressure, temperature and humidity.

ndd TrueFlow is a hygienic and resistance-free solution that does not require calibration during its lifetime.

EasyOneConnect

EasyOne Connect software offers one database and one platform for all EasyOne point-of-care-solutions. Data management has never been easier.

Connect with Us



ndd Medical
Technologies



nddmedical



nddMedical



nddmed

TO PLACE AN ORDER, CONTACT: IDEM, 4814 EAST SECOND STREET, BENICIA, CA 94510 PHONE: 1-800-736-6334

ndd Medical Technologies • 300 Brickstone Square • Suite 604 • Andover, Massachusetts 01810 • Phone: 978-470-0923 • www.nddmed.com

© Copyright 2018. All rights reserved

www.idem.cc Email: info@idem.cc 707-746-8597